



*traffic-lines*  
***twister***



**REMOVAL OF MARKINGS AND  
SURFACE COATINGS OF ALL KINDS**

**PARTICULARLY GENTLE ON SURFACES**

**INNOVATIVE SUCTION TECHNOLOGY**

**MODULAR SYSTEM**

**RESOURCE-SAVING**

**CONTENTS**

Areas of application	<b>6-7</b>
Patented technology	<b>8-9</b>
Benefits	<b>10-13</b>
Modular system	<b>14-15</b>
Water treatment unit	<b>16-17</b>
Marking removal additives	<b>18-19</b>
Company	<b>20-21</b>

*traffic-lines*  
***twister***



**MARKING REMOVAL WITH ADDED VALUE**

High-performance marking removal for maximum protection of the road surface, with no capping.

With **traffic-lines twister**, the patented high-pressure water blasting system with innovative suction technology for efficient and resource-saving removal of road markings. Only with water or biodegradable marking removal additives.



**CONTENTS**

Areas of application	<b>6-7</b>
Patented technology	<b>8-9</b>
Benefits	<b>10-13</b>
Modular system	<b>14-15</b>
Water treatment unit	<b>16-17</b>
Marking removal additives	<b>18-19</b>
Company	<b>20-21</b>

*traffic-lines*  
**twister**

# REDEFINING ROAD MARKING REMOVAL

With conventional marking removal processes that use high-pressure water jet systems, performance can be impaired by the presence of backwater, which can seriously affect the results of the marking removal process.

With the innovative suction technology of the **traffic-lines twister** no water is allowed to accumulate in the suction hood, with the result that no water remains on the road surface. The road is then directly available for continued working or it can be immediately restored to traffic use. Loose road dirt, detached marking residues and the water itself are transported away in a continuous suction process directly upon removal of the markings into the suction system. In this way, road markings are removed with great efficiency and with virtually no impact on the road surface. Suitable for

- Thin-layer markings such as paints or cold spray plastic
- Thick-layer markings such as cold or thermoplastic
- Foil markings permanent and temporary



## USING THE POWER OF WATER TO REMOVE MARKINGS

Water, high pressure and innovative suction technology – a combination that makes **traffic-lines twister** the perfect solution for many applications, in addition to its primary function as a road marking remover.

## OTHER APPLICATIONS OF THE traffic-lines twister

- Preparation of newly laid road surfaces for subsequent marking (removal of concrete sediment)
- Removal of rubber abrasion from runways
- Restoring grip on racing and test tracks
- Removal of oil damage
- Restoring grip on a variety of surfaces following various kinds of deposition and surface contamination

**MARKING REMOVAL**

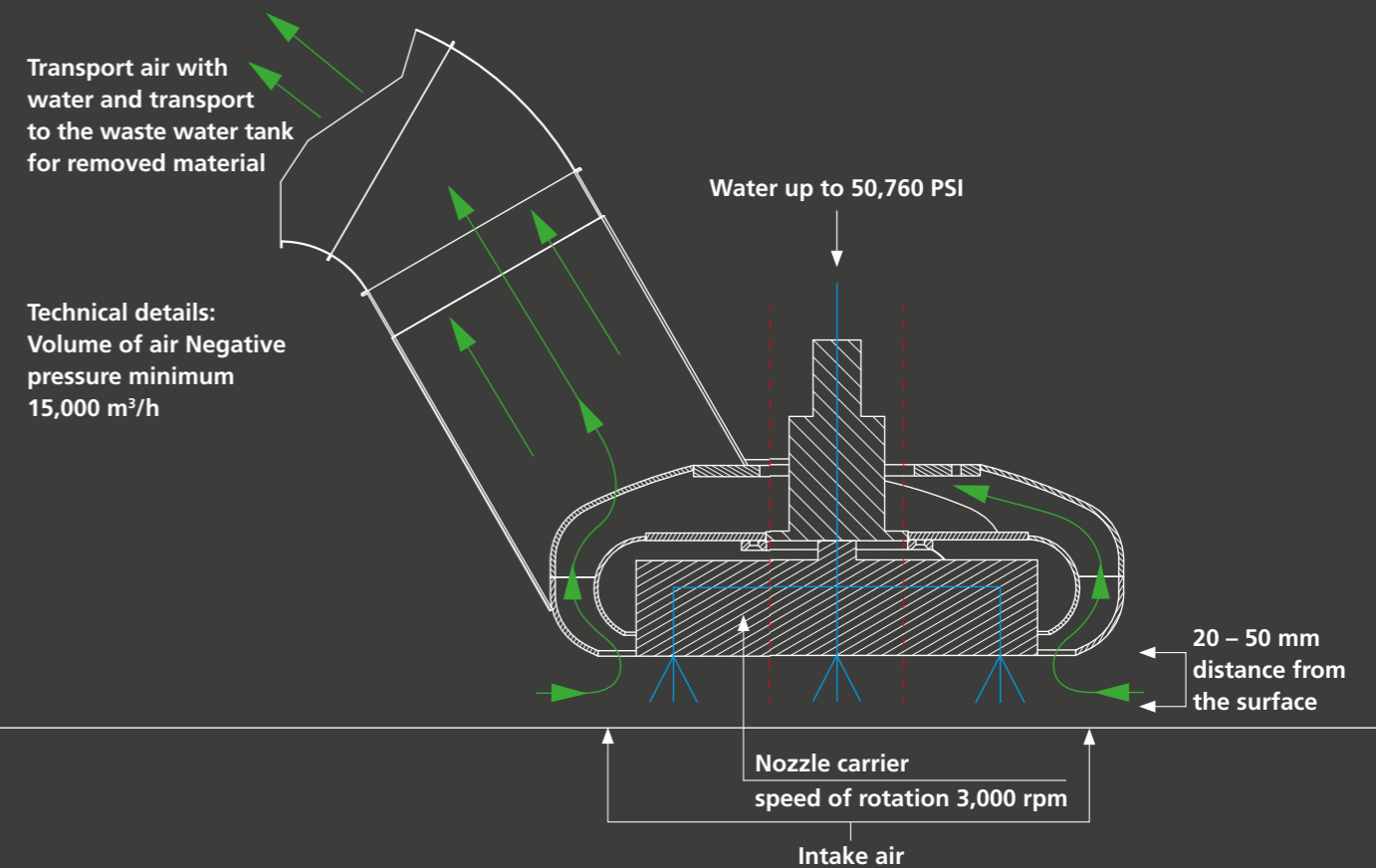
**PREPARATION FOR MARKING**

**REMOVAL OF**

**RUBBER ABRASION**

**REMOVAL OF OIL DAMAGE**

# A LEADING EDGE THROUGH INNOVATION



- The patented construction of the **traffic-lines twister** was especially conceived to support the demands of practical use.
- The core of the **traffic-lines twister** is the annular gap suction system, which is unique in the market and achieves very high air speeds at low negative pressure and with an extremely large volume of air. The flow rate that is generated enables even the smallest liquid particles to be vacuumed away. Loose particles of dirt are already sucked away before the water jet is used.

- The distance between the surface and the suction area is 25 to 50 mm. Water, loosened marking residues and basic types of surface contamination are transported directly to the waste water tank after they have been removed in a continuous suction process. Water does not accumulate in the suction hood.
- The high-pressure water jet (up to 50,760 PSI) makes direct contact with the surface that needs to be cleaned. Cleaning performance is significantly higher than conventional high pressure water systems.

- A flexible apron of natural rubber minimizes the risk of airborne particles and ensures improved work safety while reducing noise levels.
- The road surface is virtually dry after completing the marking removal process and with considerably less capping – work on the surface can continue directly after removal, whether creating new road markings or a new coating, or the surface can be immediately restored to road use.

# EFFICIENT AND GENTLE ON SURFACES

## MAXIMUM MARKING REMOVAL PERFORMANCE

Thanks to its innovative annular gap suction, the **traffic-lines twister** is in another league in terms of its efficiency and road surface impacting. Its performance and tangible added value are proven in practical use:

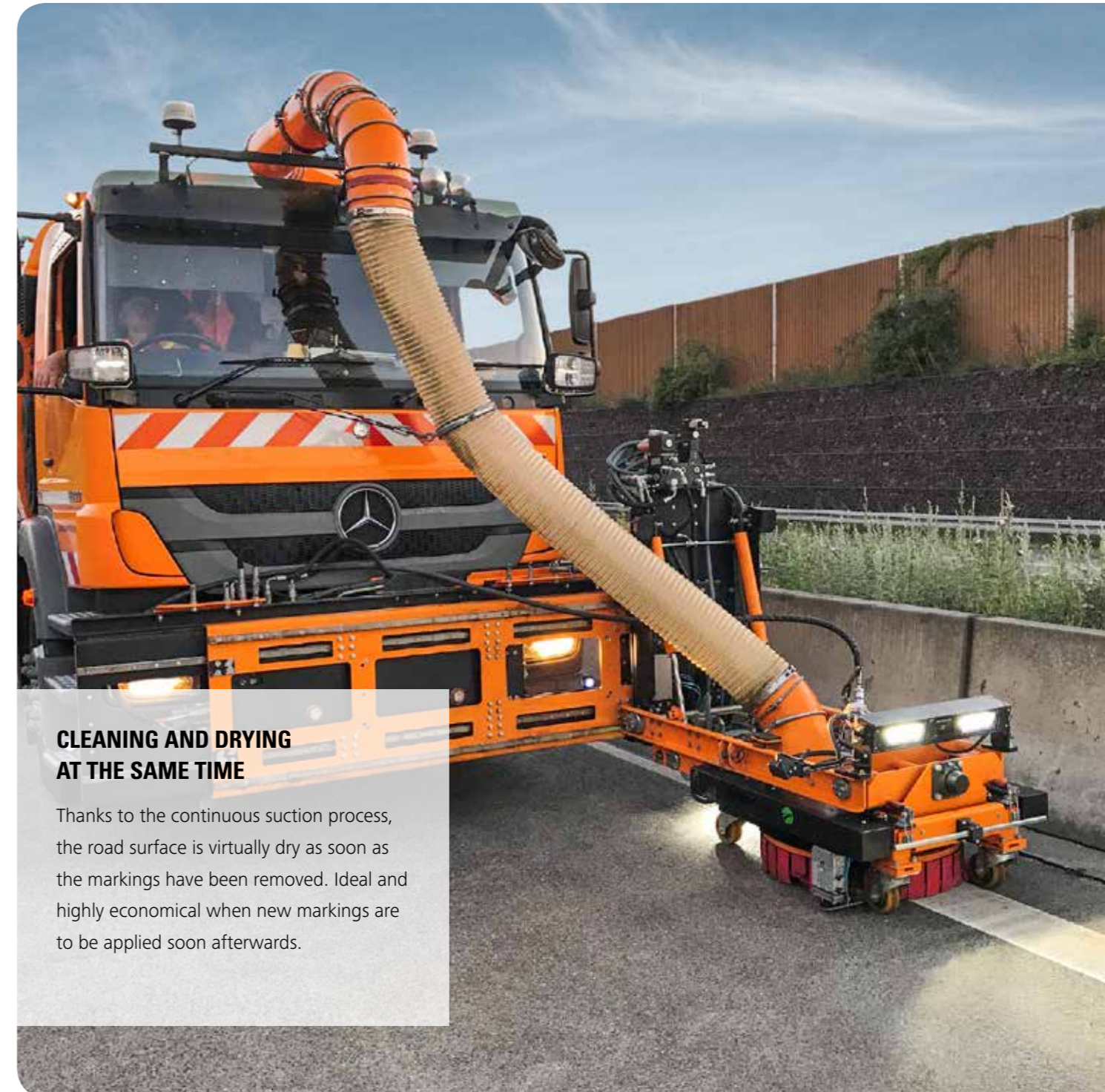
- Higher marking removal performance with no capping
- No blockage of the suction hood when removing foil markings
- Precisely adjustable and in turn very gentle to the road surface
- Economic in operation thanks to the high surface area performance
- Increased adhesion of subsequent applications and in turn greater durability
- Intelligent modular construction

## HIGH SURFACE AREA PERFORMANCE

## MAXIMUM SURFACE PROTECTION

## NO CAPPING

The results speak for themselves: A perfectly cleaned surface with no capping.



## CLEANING AND DRYING AT THE SAME TIME

Thanks to the continuous suction process, the road surface is virtually dry as soon as the markings have been removed. Ideal and highly economical when new markings are to be applied soon afterwards.

# COMPETITIVE ADVANTAGES

## AUTOMATED JOINT COVER (OPTIONAL)

The only one of its kind in the world: The automated joint cover function enables automatic protection of any type of joint in the ongoing marking removal process, for example bitumen or transverse joints, in the usual widths and without the need for additional personnel. The normal operating speed of the **traffic-lines twister** can be retained in use; It is controlled by the machine operator via remote console.

Thanks to the **traffic-lines twister's** modular construction, this intelligent equipment option can be retrofitted at any time.



Joints on roads or airfields are dynamically covered over during the ongoing marking removal process.

**JOINT PROTECTION WITHOUT  
ADDITIONAL MANPOWER**



**MARKING REMOVAL,  
SWEEPING AND CLEANING**

**POSSIBLE THROUGHOUT THE YEAR**

### THE ALL-ROUND TALENT

Marking removal system or sweeping machine: The **traffic-lines twister** reveals itself as an all-round talent thanks to its modular construction (optionally with channel brushes/roller brushes) and is suitable for all-year use, even outside the traditional road works season.

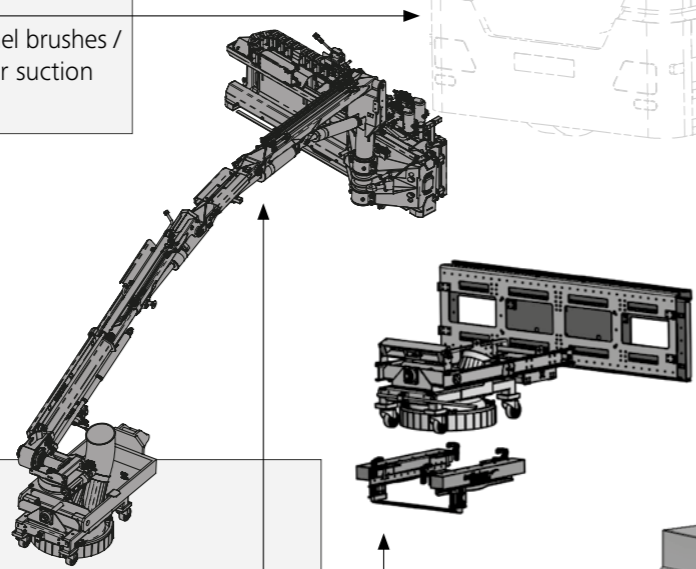
And of course, it can be used day or night. Optimum conditions for a short payback time and a rapid return on investment.

# MODULAR DESIGN

**traffic-lines twister** comes in a modular design which offers a maximum degree of flexibility. Automated joint cover, water filtration **traffic-lines water loop** or integrated diesel tanks. Various add-on modules enable configuration of the performance range and capacity of the equipment according to individual requirements. These modules can also be retrofitted at any time. In this way, the **traffic-lines twister** is always technically right up to date.

## Sweeper module

Optionally with side duct / channel brushes / roller brushes / snow shovel / rear suction or supplied by the customer



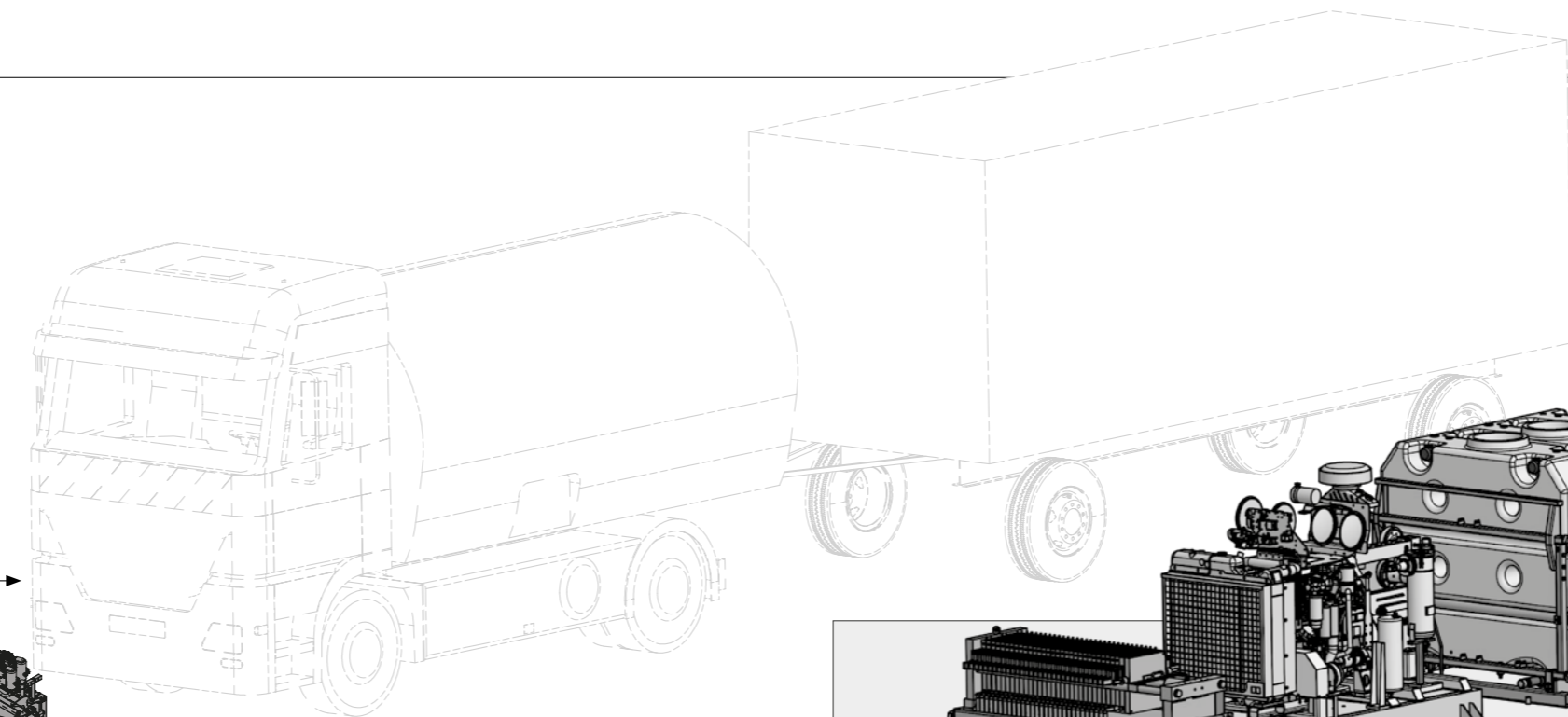
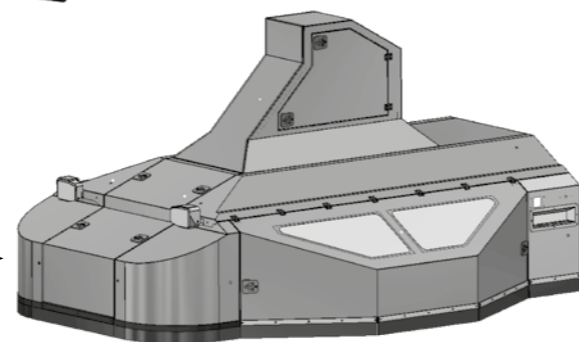
## Front module

### twister

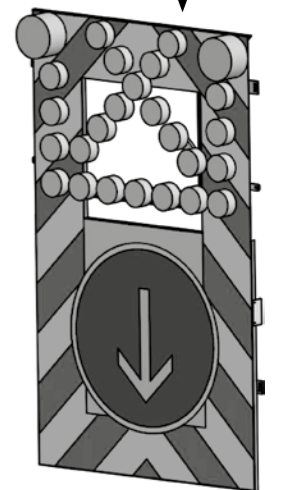
Single head (size of suction hood 37 cm / 52 cm) for removing markings as a front plate or as a semi-automatic arm – optionally with automated joint cover/ spray pattern cap

### duo twister® (adaptable)

Surface cleaning and removal of rubber abrasion. Working width is 3.10 m / 4.20 m (larger sizes available on request)



## Warning board module



## Fresh water tank module

2200 l/tank  
(number of tanks variable)

## Power station module

with diesel engine and integrated tank  
Module sizes: 34/54/77 l/min  
at 36,260 to 50,760 PSI

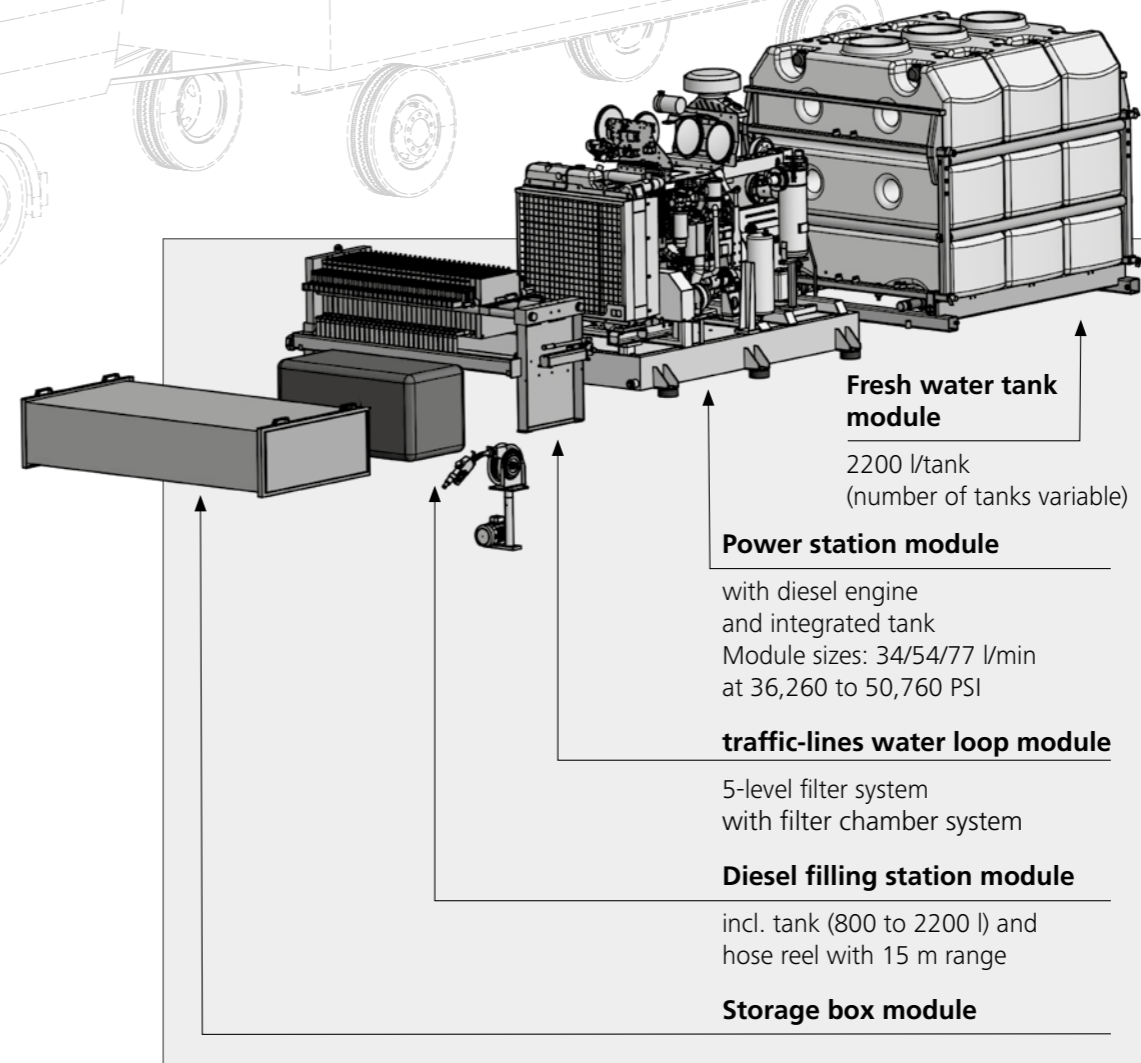
## traffic-lines water loop module

5-level filter system  
with filter chamber system

## Diesel filling station module

incl. tank (800 to 2200 l) and  
hose reel with 15 m range

## Storage box module



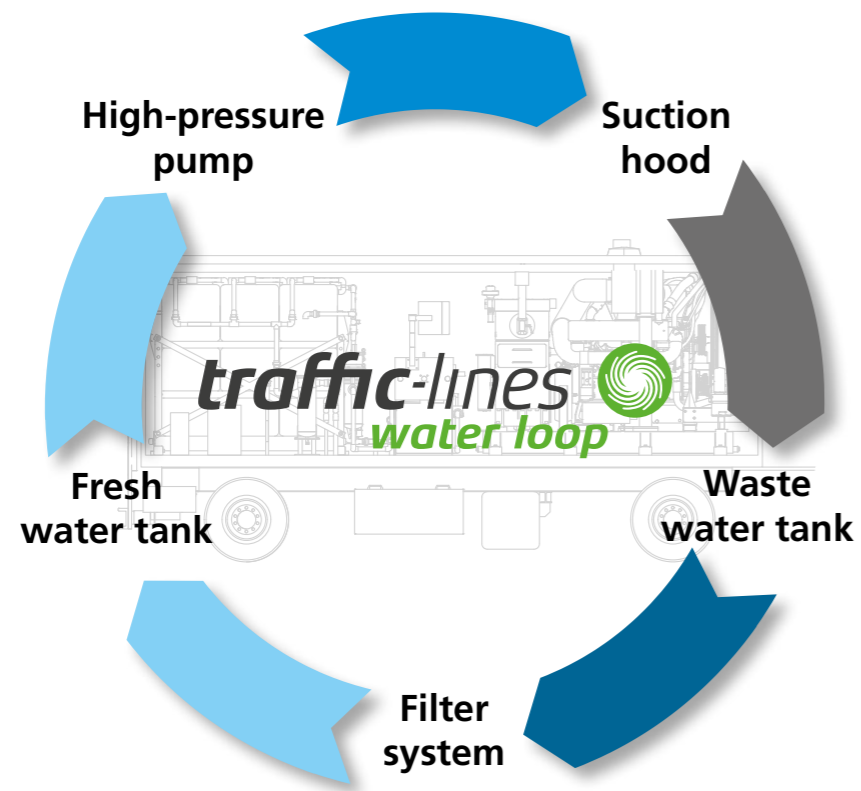


# EFFICIENCY-BOOSTING, RESOURCE-SAVING

## INTELLIGENT REUSE OF WATER

The optional **traffic-lines water loop** water treatment unit saves time by avoiding the need to constantly refill fresh water and drain off waste water during the marking removal process.

The extremely powerful suction system fitted to the **traffic-lines twister** ensures that almost every last drop of water is recycled back into the system, thus protecting valuable resources.



Water filtration samples from the treatment process, filterable solids are bound into filter cake.



**FILTER AND RECYCLING SYSTEM**

**SIGNIFICANT REDUCTION  
OF FRESH WATER CONSUMPTION**

**CONTINUOUS OPERATION**

**WASTE REDUCTION UP TO 80%**

# LIQUID MARKING REMOVAL ADDITIVES



## **traffic-lines ex**

With the **traffic-lines ex** product line, **traffic-lines** offers a coordinated solution for even more efficient marking removal. With the aid of liquid marking removal additives, existing markings are effectively dissolved, with good material compatibility, allowing the old markings to be removed, while leaving virtually no residues and avoiding surface scarring. **traffic-lines ex** marking removal additives are biodegradable in accordance with OECD301D.

For complete removal of paints containing solvents in a manner that is absolutely gentle to the surface, as well as emulsions, and for cleaning hot and cold plastics.



**SIMPLIFIED MARKING REMOVAL**

**GOOD MATERIAL COMPATIBILITY**

**BIODEGRADABLE**

**PURSUANT TO OECD 301D**

When performing marking removal with additives from the product series **traffic-lines ex** there is virtually no flushing of bitumen and the surface grain is not exposed.

**traffic-lines ex** marking removal additives have been tested for their environmental compatibility and are biodegradable in accordance with OECD 301D.

# FUTURE NEEDS INNOVATION – YOU WILL FIND A STRONG PARTNER IN US



## CORE COMPETENCIES

Working together with our network partners who operate across the globe, we develop fully integrated concepts and solutions to ensure that our customers achieve long-term success.



## KNOWLEDGE TRANSFER

**traffic-lines** is a member of the German Research Association for Road Markings e.V. (DSGS) and is a certified member of the GATE Alliance.

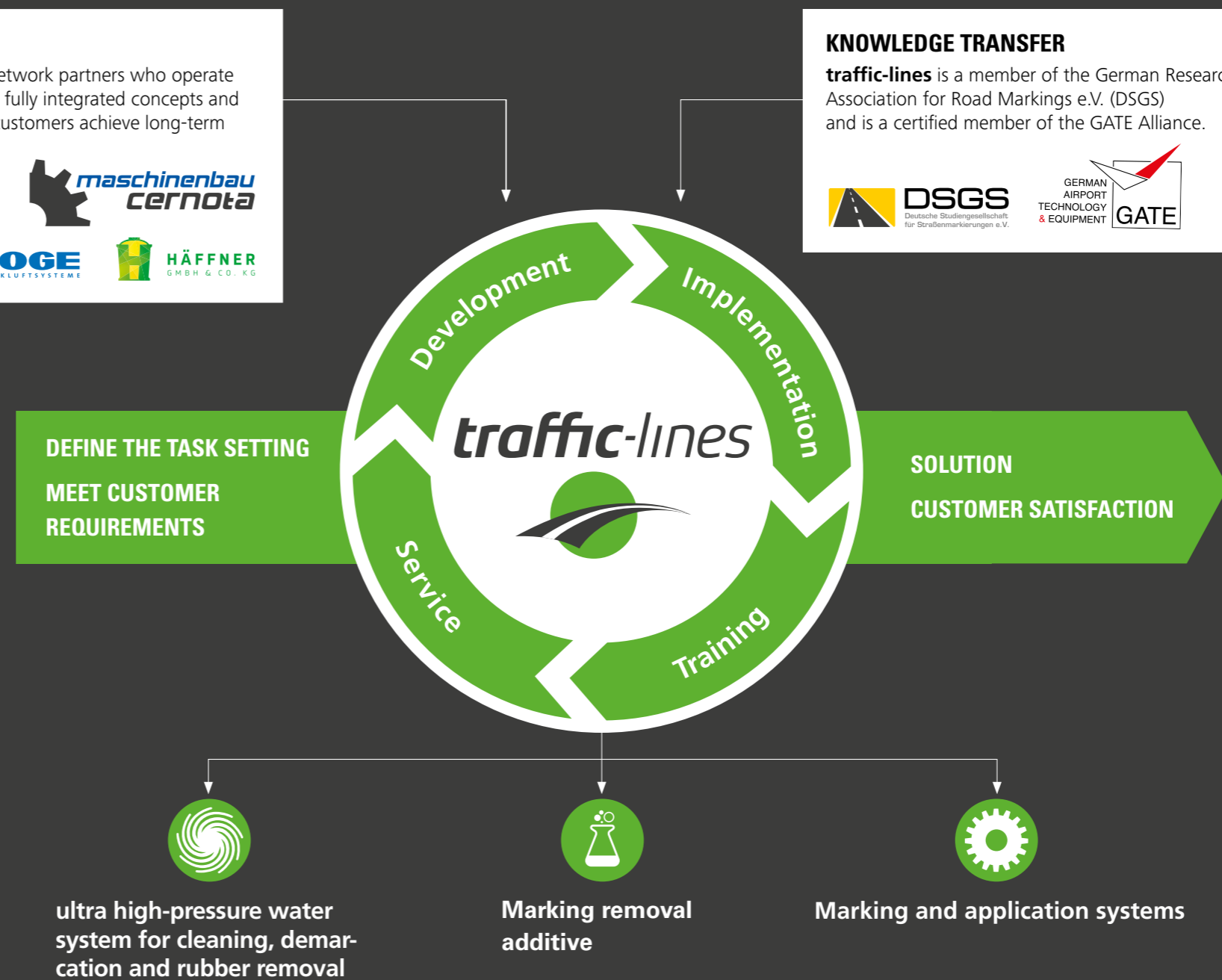


Innovation through making connections and developing a vision. We live by this philosophy at **traffic-lines** and work alongside our customers as a **pioneer** and effective development partner to generate **solutions that meet customers' individual requirements**. From the first idea until it is ready to go into production. From prototyping through to market launch.

## EXCELLENT SERVICE IS PART OF OUR DNA

We pride ourselves on providing excellent customer service. We are always on hand to serve our customers during every phase of the project, for example, we provide full support throughout the **commissioning process** and our **experienced machine operators provide new drivers with comprehensive training** under real conditions in the weeks before and after the **traffic-lines duo twister** is handed over to the customer.

In line with this customer-focused approach, we are currently setting up our own **traffic-lines academy** which will serve as a forum for training, communication and networking.





Contact:

Gargash Motors and General Trading  
Deira, Dubai – United Arab Emirates

TEL : +971 4 3811 900

FAX: +971 4 3811 911

**[www.gargashmachinery.com](http://www.gargashmachinery.com)**

[info@gargashmachinery.com](mailto:info@gargashmachinery.com)

P.O. BOX : 1047 Dubai, UAE

**traffic-lines** 